

Sunbeam[®]



advanced
**bark
control
collar**



**STATIC
INSTRUCTION MANUAL**

IMPORTANT SAFEGUARDS

- This device should only be used for bark deterrent training of dogs.
- This device is not a toy; keep out of reach of children.
- This device is not intended to provide protection against aggressive dogs.
- Your dog should be in good health when using this product.
- This product is not to be used on dogs less than 9 lbs.
- This product is not to be used on dogs less than 6 months old.
- Your dog should not be left unattended with this collar on. Avoid leaving the collar on the dog for more than 8 continuous hours per day. Prolonged collar use can cause pressure sores which may lead to skin irritation such as contact dermatitis or decubitus ulcers. If a rash is discovered discontinue use until the skin area heals completely. If condition persists for more than 48 hours, contact your veterinarian.
- Do not attach a leash to the Sunbeam® Advanced Bark Control Collar. A separate collar or harness may be used provided it does not interfere with the bark control collar.
- **Warning:** This device uses two Lithium (CR 2032) coin type batteries. Keep the batteries out of reach of children. If swallowed, immediately seek medical help as serious injury may occur.

SAVE THESE INSTRUCTIONS

About this product:

The Sunbeam® Advanced Bark Control Collar uses a proprietary dual microphone voice mapping system for detecting barking behavior. This unique system ensures that only the dog wearing the collar is determining when a correction is administered.

- This product should be used when training dogs for deterring barking behavior.
- This product can be used indoors and outdoors.
- Adjustable collar fits neck sizes between 6 and 28 inches.
- 3 levels of correction can be adjusted for your dog
- Low battery indicator
- Weatherproof

DO NOT USE THIS BARK CONTROL COLLAR UNTIL YOU HAVE READ THESE INSTRUCTIONS

Product Overview:

MAIN CONTROL BUTTON:

- On/Off
- Correction level adjustment
- System reset



INDICATOR LIGHTS:

- Low • Med • High

Solid Green:

Correction level selected and functioning properly

Flashing Green:

Bark detected and correction administered

Flashing Red:

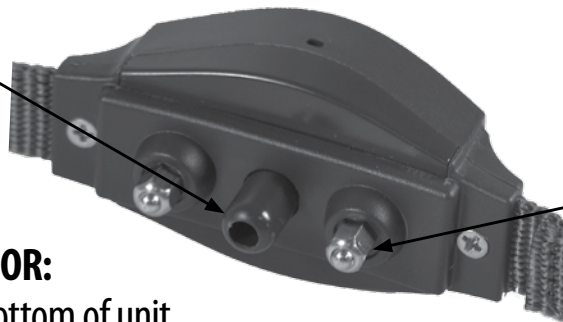
Over Correction Mode

All 3 Flashing Red:

Low battery

SENSOR PROBE:

Used to detect barking



STAINLESS STEEL PROBES:

Correction administering system

Correction administering system

BATTERY DOOR:

Located on bottom of unit for battery installation and removal



FABRIC COLLAR

ADJUSTABLE BUCKLE

QUICK RELEASE CLASP

How it Works:

The Sunbeam® Advanced Bark Control Collar has a proprietary bark detection system that uses sensors and a voice mapping system to determine barking behavior. This specially designed system ensures that a correction is administered only when unwanted barking behavior is occurring. The system also has been designed to prevent continuous corrections if excessive barking is detected. **AN OVER CORRECTION MODE** causes the system to turn off and automatically resets.

OPERATING INSTRUCTIONS

Battery Installation:

IMPORTANT: This step is to be completed when the collar is NOT on your dog.

- Remove two screws securing the battery compartment using a cross head or Phillips head screwdriver. (*fig. 1*)
- Lift battery compartment from main body of bark collar. (*fig. 2*)
- Insert two CR2032 Lithium coin batteries into battery compartment. Batteries should be placed with the positive side facing down.

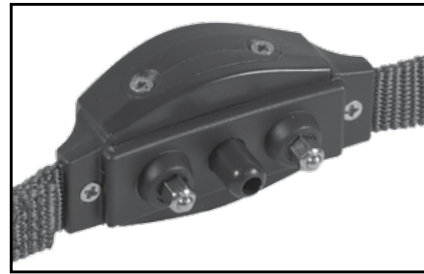


figure 1

IMPORTANT: Follow orientation as described on graphics illustrated on battery compartment. (*fig. 3*)

- Replace battery compartment with two CR2032 Lithium coin batteries back into main body.
Note: The battery compartment can only be assembled in one orientation, do not force closed.



figure 2

- Tighten the two screws using the cross head screwdriver, do not over tighten.
- To test the unit turn on by pressing and holding the main control button for 4 seconds. The unit will beep twice and flash twice leaving one LED illuminated to indicate which correction level is in use.



figure 3

- To turn off the unit, press and hold the main control button for 4 seconds. The unit will beep twice and flash twice leaving no LEDs illuminated indicating the unit is off.

- When replacing batteries after usage you must completely discharge the collar by holding a plastic handle screwdriver across both stainless steel probes for 5 seconds. Make sure the metal portion of the screwdriver is touching both stainless steel probes and the unit is in the OFF position.

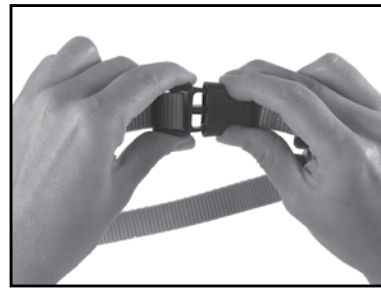


figure 4

COLLAR FITTING

Proper fit of the Sunbeam® Advanced Bark Control Collar is essential to establish a good training foundation and optimal performance.

Note: Batteries should be installed properly and in OFF position before proceeding with fitting the collar to your dog.

STEP 1: Ensure dog is in a relaxed position.

STEP 2: With the collar clasp open loosen the adjustment buckle such that it can reach completely around your dog's neck. (fig. 4)

Place sensor probe directly over the dog's voicebox. When buckled, the collar should rest directly behind the dog's ears (the highest part of the neck). (fig. 5)

Note: Make sure both stainless steel probes go through the coat completely and make contact with the skin.

Use the longer stainless steel probes if the coat does not allow the shorter probes to reach the skin.

Before changing the stainless steel probes you must completely discharge the collar by holding a plastic handle screwdriver across both stainless steel probes for 5 seconds. Make sure the metal portion of the screwdriver is touching both stainless steel probes and the unit is in the OFF position.

Trimming the hair around the dog's neck where the stainless steel probes will touch the skin is optional, **DO NOT** trim the hair so short that the skin is completely exposed as this might allow for an irritation or rash to occur.



figure 5



figure 6



figure 7



figure 8

Use a wrench when assembling or disassembling the stainless steel probes, do not over tighten. (fig. 6)

STEP 3: Close and lock clasp. (fig. 7)

STEP 4: Adjust for proper fit by pulling on strap until you can fit two fingers in between your dog's neck and the collar. (fig. 8)

Note: Verify that the sensor probe is directly over the dog's voicebox. The collar should be firm but not excessively tight.

STEP 5: Let your dog wear the product for sufficient time confirming that they are moving around normally. This step is to ensure that under daily activity the collar will remain secure and not become loose.

STEP 6: Remove collar from dog and cut the excess collar material, leaving approximately 1 inch.

STEP 7: Seal the edge of the collar using a flame.

STEP 8: Reattach collar to your dog. Check the fit of the collar several times per day. Wipe the stainless steel probes weekly with a damp cloth while collar is in off position.

Reminder: If you choose to use a 2nd collar, leash or harness system make sure it does not interfere with the operation of the Sunbeam® Advanced Bark Control Collar.

READY TO USE

Note: The **BATTERY INSTALLATION** and **COLLAR FITTING** steps must be completed before you are ready to use.

STEP 1: Holding the main body of the Sunbeam® Advanced Bark Control Collar in both hands PRESS and HOLD the Main Control Button for 4 seconds.

Note: You will hear 2 audible beeps and 3 LEDs flash GREEN indicating the device is on.

The default correction level is **LOW**; this setting will illuminate GREEN for 10 seconds and then turn off.



The Sunbeam® Advanced Bark Control Collar has been designed to maximize battery life and has a **SLEEP MODE** that it enters if no user input or barking is detected.

STEP 2: Set correction level by pressing and holding (approximately 2 seconds) the Main Control Button until a GREEN LED illuminates at the desired setting.

When a GREEN LED is illuminated press once the Main Control Button to toggle to the next correction level. Once a correction level is chosen the GREEN LED will turn off and the system has entered **SLEEP MODE**.

Note: It is recommended to start on the **LOW** setting and monitor your dog's behavior before determining if a higher correction level is needed.

STEP 3: Attach collar to your dog as you did in the **COLLAR FITTING** stage.

SPECIAL OPERATING NOTES

SLEEP MODE: This is the normal operating mode of the bark control collar. The system has been designed to maximize battery life. You can verify the status of the system by pressing and holding the Main Control Button for 2 seconds.

The Sunbeam® Advance Bark Control Collar retains the LAST correction level setting and will resume this mode when the unit is turned on.

The LED of the setting chosen will illuminate GREEN when a bark has been detected and a correction is being administered.

OVER CORRECTION MODE: If excessive barking is detected the bark control system will enter a mode designed to shut down the system.

The LED of the selected setting will illuminate RED and will automatically reset. You can manually reset the system by pressing and hold the Main Control Button.

LOW BATTERY MODE: All 3 LEDs will flash RED for 5 seconds when the battery needs to be replaced.

TRAINING GUIDE

Proper training is essential to achieving the best results from the Sunbeam® Advanced Bark Control Collar for you and your dog. When first starting to use the bark control collar, you should closely monitor your dog's reaction when barking behavior is exhibited.

When you begin using the bark control collar, your dog should be inside a protected area. The protected area should not be a cage, crate, or kennel. If outside, your dog should be in a safe protected area so that your dog is unable to run away when they receive the correction from the bark control collar.

Each dog can have a different reaction from the bark control collar's correction. These reactions can vary from a dip of the head, to shaking the head, whining, excessive barking, confusion, or running away. In the event of an extreme reaction, wait until your dog is calm before approaching your dog.

The reaction your dog will have is dependent on your dog's personality. The first several times you use the bark control collar, you must be present. It is not recommended that you leave the bark control collar on your dog when you will not be present for extended periods of time.

The bark control collar should be worn when you want to deter unwanted barking behavior. Consistently using the bark collar at the correct time will give the best results. The more disciplined you are when choosing to use the bark control collar the better your dog will understand that barking behavior is not wanted when wearing the collar.

The training process needs to be interactive. Once your dog has received a bark collar correction and stopped barking, you can reward your dog by praising and/or giving a treat.

For the best results with the Sunbeam® Bark Control Collar, you may consider consulting a qualified obedience trainer.

HINTS AND TIPS

Is this product right for me and my dog?

- The Sunbeam® Advanced Bark Control Collar is best used in conjunction with behavior training from a qualified behaviorist or obedience trainer.
- Before using the bark control collar on an aggressive or phobic dog, consult a qualified behaviorist or obedience trainer.

CARE AND MAINTENANCE

The Sunbeam® Advanced Bark Control Collar is weatherproof but is **NOT** submersible so care must be taken when cleaning.

- Always remove the battery before cleaning
- Use a clean damp cloth, water only
- Never use any household or industrial cleaners
- Do not submerge the unit in water or any other liquid
- Keep the dog's coat and skin clean in the area where the collar makes contact

- Check the fit of the collar several times per day
- Wipe the Stainless Steel Probes weekly with a damp cloth while collar is in off position

Note: The Lithium coin batteries used in this product contain perchlorate material. Special handling may apply in California. Go to: www.dtsc.ca.gov/hazardouswaste/perchlorate for more information.

FCC STATEMENT

Potential for Radio/Television Interference

This product has been tested and found to comply with the limits for a Class B digital device, pursuant to part 15 of the FCC rules.

These limits are designed to provide reasonable protection against harmful interference in a residential installation. The product generated, uses, and can radiate radio frequency energy and, if not installed and used in accordance with the instructions, may cause harmful interference to radio communications.

However, there is no guarantee that the interference will not occur in a particular installation. If the product does cause harmful interference to radio or television reception, which can be determined by turning the product on or off, the user is encouraged to try to correct the interference by one or more of the following measures:

- Reorient or relocate the receiving antenna.
- Increase the separation between the product and the receiver.
- Connect the product into an outlet on a circuit different from that to which the receiver is connected.
- Consult the dealer or an experienced radio/TV technician for help.

Changes or modifications not expressly approved by the party responsible for compliance could void the user's authority to operate the equipment.

1 YEAR WARRANTY

In the U.S.A. and Canada

If you have any question regarding this warranty or would like to obtain warranty service, please call 1-866-537-2249 and a convenient service center address will be provided to you.

Sunbeam® Products, Inc. doing business as Jarden Consumer Solutions, or if in Canada, Sunbeam® Corporation (Canada) Limited doing business as Jarden Consumer Solutions (collectively "JCS") warrants that for a period of one year from the date of purchase, this product will be free from

defects in material and workmanship. JCS, at its option, will repair or replace this product or any component of the product found to be defective during the warranty period. Replacement will be made with a new or remanufactured product or component. If the product is no longer available, replacement may be made with a similar product of equal or greater value. This is your exclusive warranty.

DO NOT attempt to repair or adjust any electrical or mechanical functions on this product. Doing so will void this warranty.

This warranty is valid for the original retail purchaser from the date of initial retail purchase and is not transferable. Keep the original sales receipt. Proof of purchase is required to obtain warranty performance. JCS dealers, service centers, or retail stores selling JCS products do not have the right to alter, modify or any way change the terms and conditions of this warranty. This warranty does not cover normal wear of parts or damage resulting from any of the following: negligent use or misuse of the product, use on improper voltage or current, use contrary to the operating instructions, disassembly, repair or alteration by anyone other than JCS or an authorized Sunbeam® service center. Further, the warranty does not cover: Acts of God, such as fire, flood, hurricanes and tornadoes.

What are the limits on Sunbeam's Liability?

JCS shall not be liable for any incidental or consequential damages caused by the breach of any express, implied or statutory warranty or condition. Except to the extent prohibited by applicable law, any implied warranty or condition of merchantability or fitness for a particular purpose is limited in duration to the duration of the above warranty. JCS disclaims all other warranties, conditions or representations, express, implied, statutory or otherwise. JCS shall not be liable for any damages of any kind resulting from the purchase, use or misuse of, or inability to use the product including incidental, special, consequential or similar damages or loss of profits, or for any breach of contract, fundamental or otherwise, or for any claim brought against purchaser by any other party.

Some provinces, states or jurisdictions do not allow the exclusion or limitation of incidental or consequential damages or limitations on how long an implied warranty lasts, so the above limitations or exclusion may not apply to you. This warranty gives you specific legal rights, and you may also have other rights that vary from province to province, state to state or jurisdiction to jurisdiction.

In the U.S.A., this warranty is offered by Sunbeam® Products, Inc. doing business as Jarden Consumer Solutions located in Boca Raton, Florida 33431.

In Canada, this warranty is offered by Sunbeam® Corporation (Canada) Limited, doing business as Jarden Consumer Solutions located at 20 B Hereford Street, Brampton, Ontario L6Y 0M1.

PLEASE DO NOT RETURN THIS PRODUCT TO ANY OF THESE ADDRESSES OR TO THE PLACE OF PURCHASE.

© 2011 Sunbeam® Products, Inc. doing business as Jarden Consumer Solutions. All rights reserved. Distributed by Sunbeam® Products, Inc. doing business as Jarden Consumer Solutions, Boca Raton, Florida 33431.